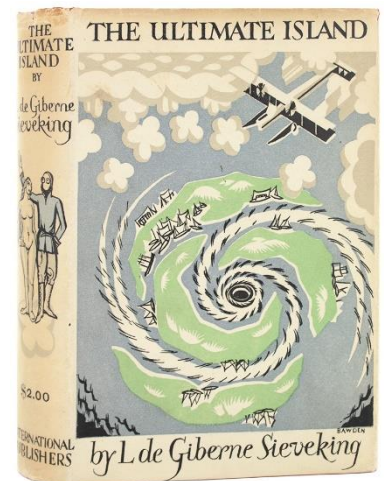


EDWARD BAWDEN

Early Edward Bawden dustjacket

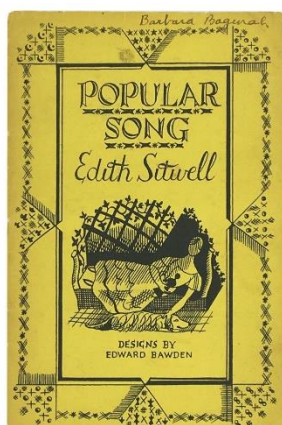
1. **Sieveking (L. de Giberne) *The Ultimate Island***. A Strange Adventure. New York: International Publishers, 1925, *FIRST AMERICAN EDITION*, frontispiece map by Edward Bawden, tiniest of nicks to leading edge of first few leaves, pp. 340, crown 8vo, original orange cloth, lettered in black to backstrip and upper board, edges roughtrimmed, ownership inscription to flyleaf, dustjacket with designs to front and backstrip panels by Edward Bawden, a couple of tiny nicks around head, the backstrip panel gently browned, very good £800



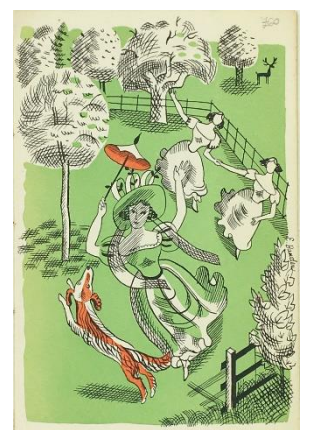
Early work by Edward Bawden, in the year of his graduation from the Royal College of Art; a wonderful design. For the UK edition, the frontispiece map was used on the endpapers.

Sieveking seems to have been well-served by a uniquely talented generation of artists - other of his work carried designs by Paul and John Nash.

The present work is a complex story (a contemporary review in *The Spectator* considered it rather overcrowded with ideas) of the near-future, where the availability of commercial transatlantic flight (fascination with air travel was a legacy of Sieveking's War service) leads to the discovery of the lost Atlantis in a group of islands within a gigantic whirlpool.



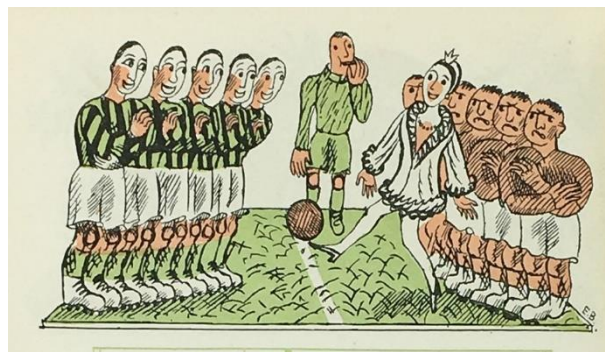
2. **Sitwell (Edith) *Popular Song***. [Ariel Poem No. 15.] Faber and Faber, [1928], *FIRST EDITION*, colourprinted full-page illustration, typographical border to the poem, pp. [4], foolscap 8vo, original sewn yellow wrappers with a design by Bawden to front, lightly handled, a little split at ends of spine, ownership inscription of Barbara Bagenal at head of front (see below), good (Fifoot EA16b) £60



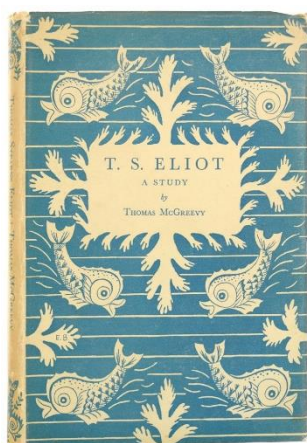
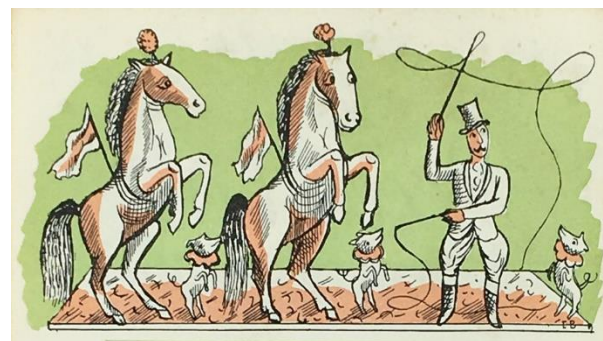
The copy of artist Barbara Bagenal (née Hiles), a friend of Carrington from the Slade who assisted the Woolfs with their early printing and had relationships with Clive Bell, Saxon Sydney-Turner, David Garnett and John Maynard Keynes.

3. (Bawden.) [Cochran, Charles B., editor] *Review of Revues & Other Matters*.

Jonathan Cape, 1930, numerous monochrome illustrations, head- and tail-pieces and decorated initials, calendar illustrated in colour by Edward Bawden at end of book, publisher's orange cloth backed sea-green paper-covered boards, front board with orange printed label, backstrip lettered in gilt, corners slightly rubbed, faint mark at upper edge of backstrip and front board corner, very good £50



A decorative contemporary theatrical miscellany with pieces by Constance Collier, Sidney Dark and James Agate among many others; vignettes and illustrations by artists including William Nicholson, Oliver Messel, Ceri Richards, Althea Willoughby and, notably, Edward Bawden who supplies the coloured calligraphic head-pieces and illustrations for each month of the calendar: golf, tennis, acrobatics, football and dancing horses feature.

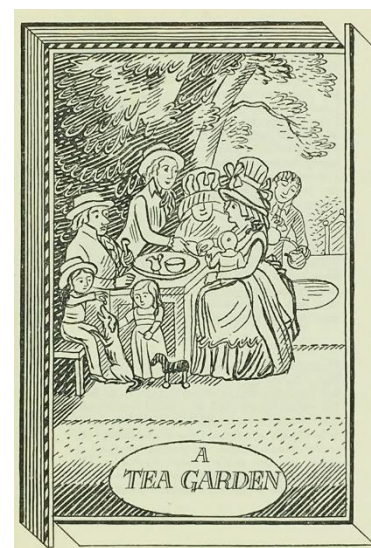


4. (Eliot.) McGREEVY (Thomas) *Thomas Stearns Eliot. A Study* [The Dolphin Books.] *Chatto & Windus, 1931, FIRST EDITION, Bawden vignette to title-page, a sprinkling of faint spots to opening and closing leaves, pp. [viii], 71, foolscap 8vo, original cream boards with overall Bawden design printed in green, a couple of faint spots to both boards, edges and endpapers lightly spotted, Bawden dustjacket discreetly price-clipped, the backstrip panel a little browned, very good £50*

The Irish modernist, sometimes MacGreevy, part of the *Criterion*'s roster, offers reflections on Eliot's poetry up to the recent 'Ash Wednesday'. MacGreevy's published output is slim but his

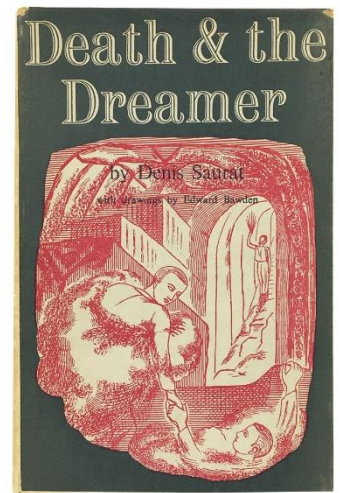
association with writers such as Eliot, Joyce, Beckett, and Wallace Stevens indicates its calibre.

5. Bawden (Edward, Illustrator) *A NEW ESSAY upon Tea addressed to the Medical Profession*. *Empire Tea Market Expansion Board, 1936, FIRST EDITION, 10 illustrations (4 full-page) by Edward Bawden, one printed in black and blue, a few faint spots at head of half-title and one to title-page, pp. 40, foolscap 8vo, original grey boards, some light handling and a few faint spots and marks, the spine a little cracked, laid in (as issued) a leaf presenting this book and one on blue paper citing a review from the BMJ, good £150*



from Bawden's library

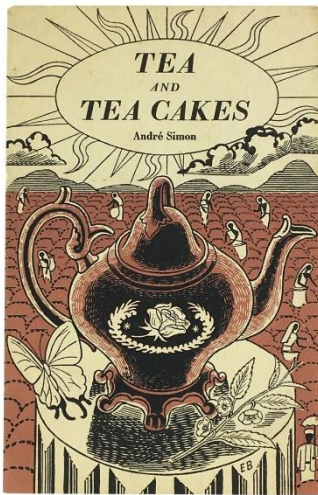
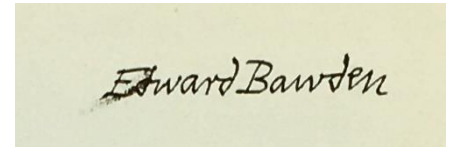
6. (Bawden.) SAURAT (Denis) *Death and the Dreamer*. With drawings by Edward Bawden. Westhouse, 1946, FIRST EDITION, frontispiece and 10 full-page drawings by Bawden, pp. 150, crown 8vo, original mustard yellow cloth with an abstract design by Bawden stamped in black to upper board, backstrip lettered in black, dustjacket with Bawden design to front, the backstrip a little sunned, lightly nicked and chipped at extremities, very good £150



The illustrator's own copy, with the signature of Edward Bawden on the flyleaf.

An imaginative work, rooted in dream-experience, but using the prism of the Second World War to bring various events from history and the author's own experience into interrelation.

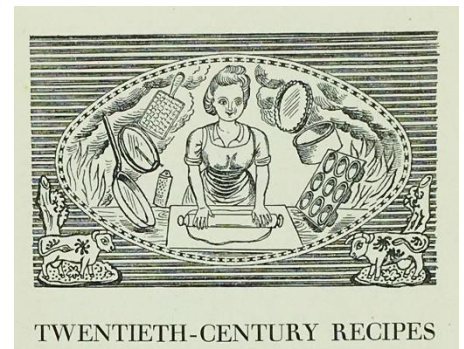
Bawden's drawings, his characters wearing blank expressions, offer an excellent accompaniment.



7. (Bawden.) SIMON (André) *Tea and Tea Cakes*. The Wine and Food Society & The Empire Tea Bureau, 1946, second edition, with six monochrome vignettes by Edward Bawden, pp. 28, 8vo, publisher's wrappers with cover design of Chinese tea-pot in tea-growing landscape by Bawden with his initials, rear cover faintly toned with a few spots, very good £120

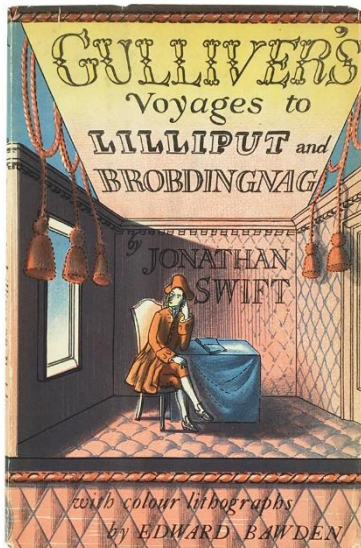
An instructional pamphlet including the history of tea, suggestions regarding how to make the perfect cup of tea and various tea-time recipes - ratafia, orange

hearts, Hyde Park Corner cakes, including several which take account of the post-war shortages, animated by Bawden's rye illustrations.



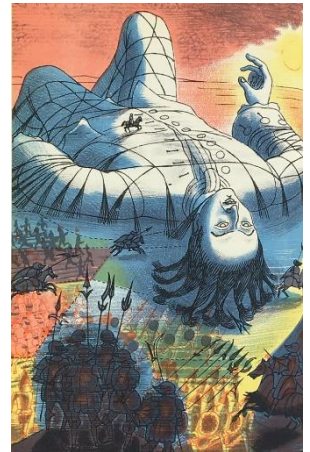
8. (Bawden.) SERJEANT (R.B.) *The Arabs. A Puffin Picture Book*. Penguin, [1947], numerous monochrome and colour illustrations, including two double-page (the Kaaba at Mecca and the battle of Qadisiya, complete with ranks of blue elephants), coloured map endpapers, small tape mark at edge of rear pastedown, pp. [36], oblong 8vo, publisher's illustrated boards, a few faint marks, hinges and edges slightly rubbed, good £70





9. (Bawden.) SWIFT *The Voyages of Lemuel Gulliver to Lilliput and Brobdingnab*. Folio Society, 1948, *FIRST EDITION THUS*, with 12 full-page colour plates by Edward Bawden, pp. xx, [ii], 153, 8vo publisher's claret quarter cloth with grey marbled boards, backstrip lettered in gilt, very slight rubbing at board edges, clipped dustjacket with a few nicks at head and foot of backstrip, short slits at front flap fold, rear panel slightly toned, very good **£75**

An inspired choice of illustrator for The Folio Society: Bawden's visual tone perfectly complimenting Swift's writing. The artist's use of colour and perspective is particularly striking.



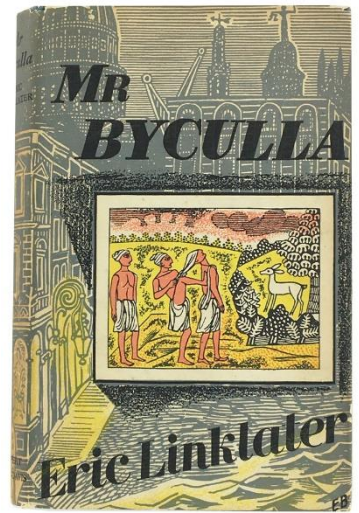
10. (Bawden.) BARROW'S. *A Store Record 1824 - 1949*. Birmingham: (Printed at The Curwen Press for) Barrow's Stores Ltd, [1949,] *FIRST EDITION*, title-page printed in blue and black, various monochrome illustrations with some colour-printed diagrams at rear, pp. 35, [8], crown 8vo, original wrappers, the cover with a colour-printed design by Edward Bawden wrapping round, touch of rubbing at extremities, top corner gently knocked, very good **£200**

An attractive account of the growth of this Birmingham institution, associated with the Cadbury family.



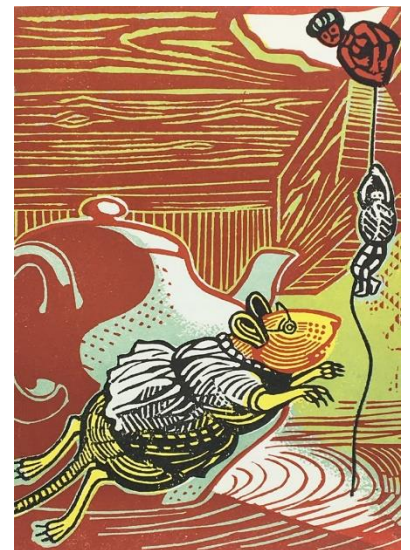
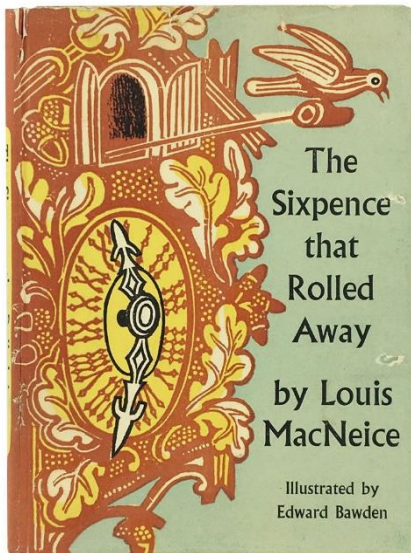
11. (Bawden.) LINKLATER (Eric) *Mr Byculla*. A Story. Rupert Hart-Davis, 1950, *FIRST EDITION*, slight lean, fore-edge with a few spots, pp. 167, [i], 8vo, publisher's blue boards, spine lettered in silver, dustjacket architectural design by Edward Bawden, backstrip faintly toned, rear panel and backstrip head & foot with a few nicks, good **£60**

'A superior thriller? Yes, but a novel of character too, and of rich, unusual inventon.' (dustjacket flap blurb).



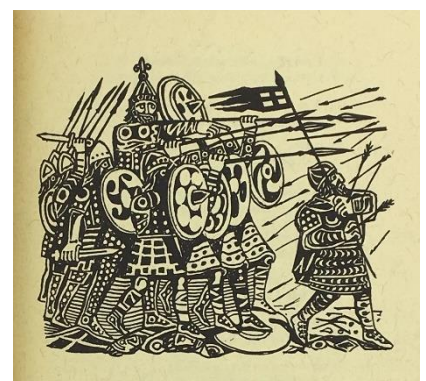
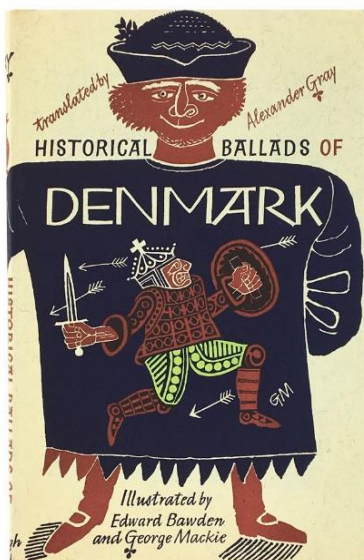
12. (Bawden.) MACNEICE (Louis) *The Sixpence that Rolled Away...* Illustrated by Edward Bawden. Faber and Faber, 1956, *FIRST EDITION*, with five linocut plates printed in four colours and six monochrome illustrations, title with rolling sixpence figure vignette, pp. 24, 8vo, publisher's illustrated boards, front board repeating cuckoo-clock linocut, rear board repeating title-page vignette, slight crack at upper hinge, dustjacket repeating cover design, with a few nicks at upper edge and backstrip foot, front panel with two small holes, backstrip with neat tape repair, very good **£350**

A somewhat disturbing cautionary tale, though ending happily with steak for the bloodhound and toy tin shrimps for the toy tin pilot, the tone complimented by Bawden's close-up, 'child's view', stridently coloured plates.

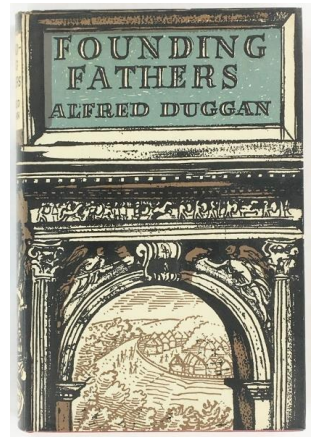


13. Bawden (Edward) & George Mackie (Illustrators) *Historical Ballads of Denmark*. Translated by Alexander Gray. Edinburgh: The University Press, 1958, 410/750 COPIES, printed on shades of fawn, blue, green and pale yellow Tosa Bütten paper, with 24 Bawden and 22 Mackie illustrations, the line blocks engraved by David Stevenson & Co., pp. x, 158, [ii], tall 8vo, publisher's purple cloth, with blind stamp of running warrior to upper board, backstrip lettered in silver, dustjacket with wrap-around illustration by Mackie (initialled), including repeated running warrior motif, slight lean, foot of dustjacket backstrip with a few nicks, very good **£70**

An attractive edition, Bawden and Mackie's characterful illustrations almost interchangeable.



14. Duggan (Alfred) *Founding Fathers*. Faber and Faber, 1959, FIRST EDITION, pp. 283, crown 8vo, *original red cloth, backstrip lettered in gilt, a few spots to edges, bookplate to flyleaf, Bawden dustjacket, very good* £60



15. (Limited Editions Club.) FLAUBERT (Gustave) *Salammbô*. With an Introduction by Justin O'Brien. [New York]: Printed at the University of Cambridge... for the Limited Editions Club, 1960, 129/1,500 COPIES signed by the artist, 8 double-page plates printed in 6 colours, numerous monochrome illustrations and head-pieces, pp. xi, [i], 316, [iv], 4to, publisher's cream buckram, backstrip with gilt letters within guilloche device designed by Bawden, backstrip slightly toned, slipcase repeating device in reverse, rubbed edges, toned backstrip, small mark at lower corner, very good £90

Bawden at his most vivid and most exotic. With Limited Editions Club slip, 'Number Six' of the 28 book series for the members of the Club, describing the edition's printing and design details, and the Club's Monthly Letter for March 1960.



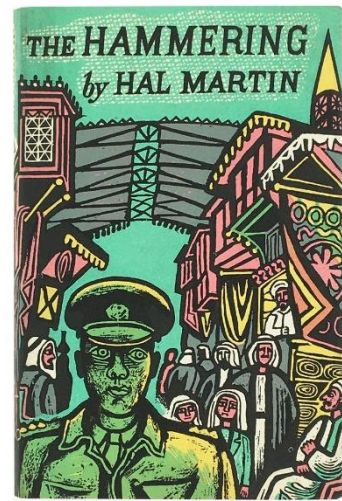
16. (Lion and Unicorn Press.) (BAWDEN.) Carolino (Pedro) *English as she is spoke*. The New Guide of the Conversation in Portuguese and English. This edition illustrated by Edward Bawden, with an Introduction by Paul Jennings. Lion and Unicorn Press, 1960, ONE OF 200 COPIES, colour-printed illustrations by Bawden throughout, the majority double-spread, captioned tissue guards bound in, titles printed in green, pp. 98, oblong royal 8vo, original pictorial cloth with a colour-printed design by Bawden wrapping round, backstrip lettered in gilt, a couple of faint marks at head of upper board, bit rubbed with a touch of wear at corners, very good £650



Bawden dustjacket

17. **Martin (Hal)** *The Hammering*. Faber and Faber, 1960, *FIRST EDITION*, pp. 222, crown 8vo, original red cloth, backstrip lettered in yellow, a couple of small spots to top edge, Edward Bawden dustjacket in excellent shape, near fine **£60**

The author's debut - Bawden's design for the jacket is striking and vivid.

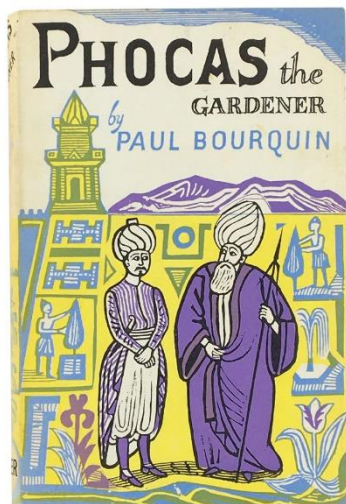
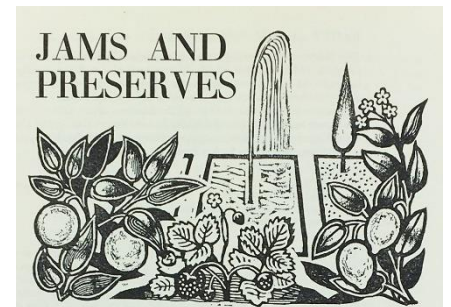
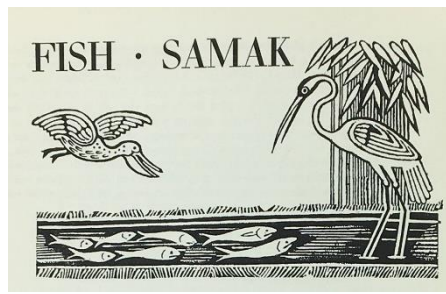
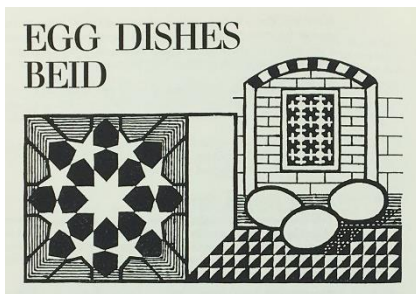
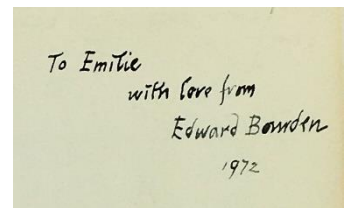


Inscribed by Edward Bawden

18. **(Bawden.) RODEN (Claudia) & Edward Bawden (Illustrator)** *A Book of Middle Eastern Food*. Illustrated by Edward Bawden. Photographs by Bruce Pinkard. Nelson, 1968, *FIRST EDITION*, frontispiece colour photograph and 7 further colour-printed photographic plates, decorations by Edward Bawden throughout, including headpieces to each of the 17 sections (and the Introduction), as well as imitations of Moorish pattern designs, pp. 320, royal 8vo, original dark green leatherette, the backstrip lettered in gilt, small vignette to upper board stamped in gilt, a very small amount of rubbing to tail, promotional material laid in, very good **£900**

Inscribed by the illustrator, Edward Bawden, on the flyleaf: 'To Emilie, with love from Edward Bawden, 1972'.

The author's debut, an important book in the transmission of this rich culinary tradition into modern Britain. Offering a rich record of Roden's own heritage and childhood, the work is both authentic and scholarly - its influence still apparent today.



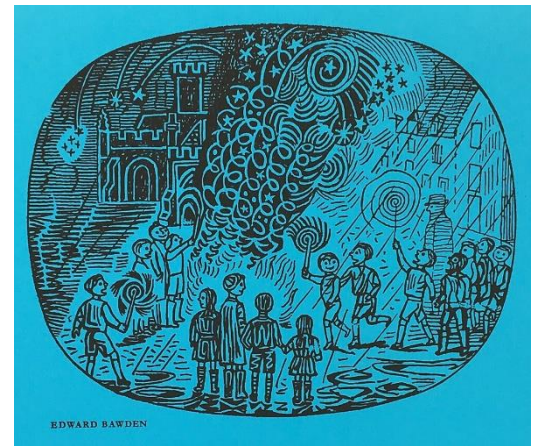
19. **(Bawden.) BOURQUIN (Paul)** *Phocas the Gardener*. Faber, 1969, *FIRST EDITION*, pp. 219 publisher's green cloth, backstrip gilt-lettered, unclipped dustjacket with Edward Bawden design on front panel and backstrip, backstrip and rear panel faintly toned, very good **£60**

The author 'tells his story of treachery and cruelty, enlightenment and courage, with a sure, laconic touch...' (flap blurb); the dustjacket design, featuring two troubled eleventh-century Turks, in typical Bawden contrasting colours (yellow, blue, purple and green).

20. Bawden (Edward, Illustrator) [Cover title:] Mackay's of Chatham Calendar for 1976 Chatham: W.J. Mackay Ltd, [1975,] *FIRST EDITION*, the month-leaves printed in red and black on red, blue and yellow Grosvenor Chater's Glastonbury Antique Laid paper, each with a Bawden drawing at the head (enlarged versions of designs for 'The Twentieth Century' magazine), ff. 12, folio, original wrappers, the front with

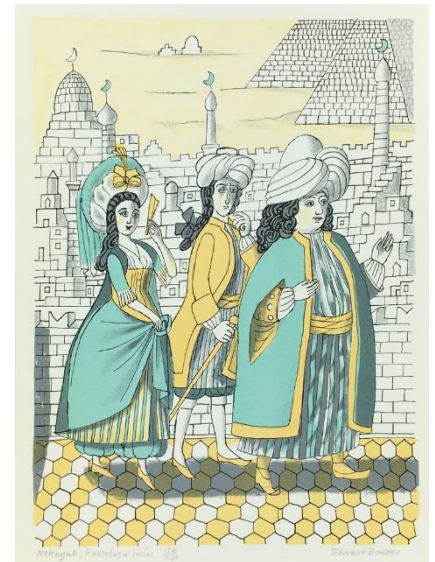


a Bawden design printed on purple Grosvenor Chater's Glastonbury Antique Laid paper, spiral-bound with hook for hanging, stiff card as rear wrapper (this with faint pencil-drawing at head), near fine **£200**



The calendar, a promotional item for the company specialising in printing, bookbinding and blockmaking, was designed by Ruari McLean.

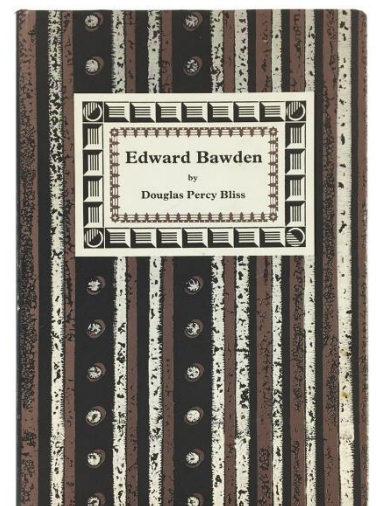
21. (Bawden). BLISS (Douglas Percy) Edward Bawden. Godalming: Pendomer Press, [1980], *FIRST EDITION*, 154/200 *DELUXE COPIES*, designed by John and Griselda Lewis and printed by the Scholar Press on Glastonbury Book Antique laid paper, numerous reproductions of illustrations by Bawden, including several in colour, pp. 200, folio, original quarter black morocco, boards covered with Bawden-designed patterned paper with black, chocolate-brown and white vertically stripes, backstrip gilt lettered, top edge gilt, colour-printed proof pull by Bawden, numbered, signed and titled by him 'Nekayah, Rasselas & Imlac', in orange card folder, matching orange slipcase, fine **£300**

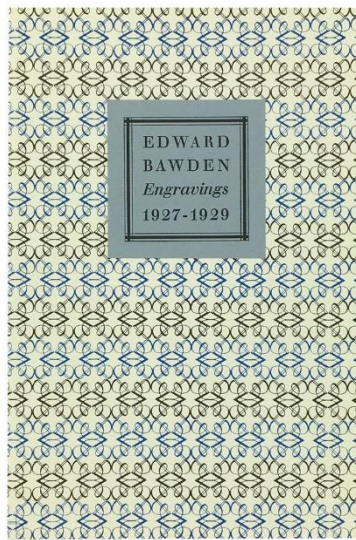


Written by Bliss, a fellow student with Ravilious, of Bawden's at the Royal College of Art, for whom Bawden provided unrivalled access to his archives, paintings, photographs, prints, books and letters.

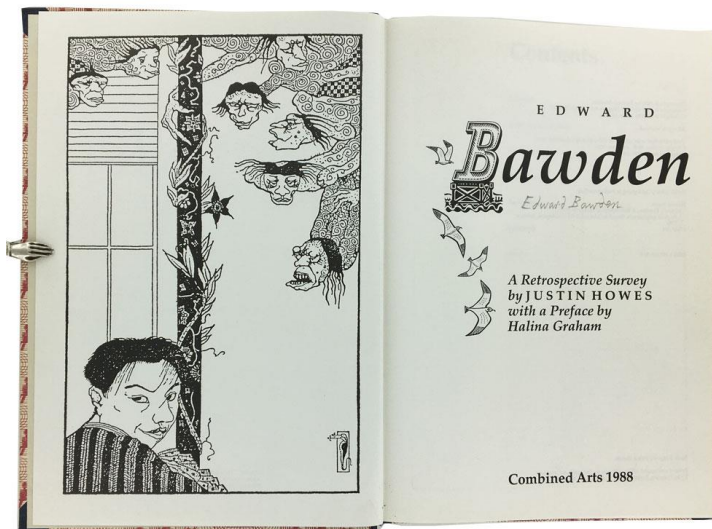
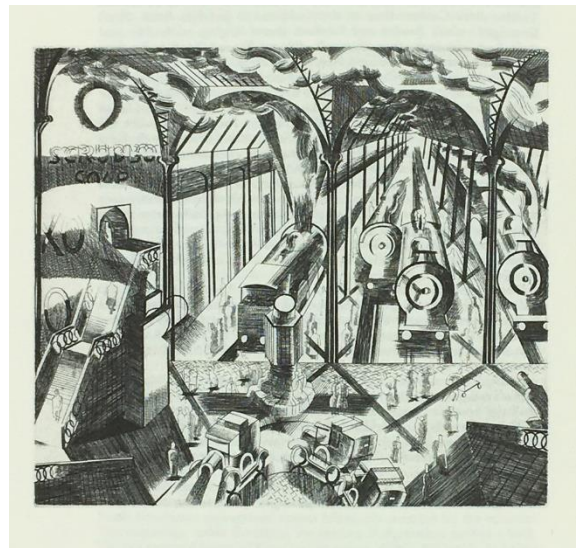
22. (Bawden). BLISS (Douglas Percy) Edward Bawden. Godalming: Pendomer Press, [1980], *FIRST EDITION*, designed by John and Griselda Lewis and printed by the Scholar Press, numerous reproductions of illustrations by Bawden, including several in colour, faint spot to half-title and colophon, pp. 200, folio, original blue cloth, backstrip lettered in gilt, dustjacket with a couple of faint spots to front panel, touch of rubbing at extremities, very good **£100**

Written by Bliss, a fellow student with Ravilious, of Bawden's at the Royal College of Art, for whom Bawden provided unrivalled access to his archives, paintings, photographs, prints, books and letters. The contents include a comprehensive bibliography of Bawden's book and periodical illustrations, dust-jacket and book-cover designs, and notices of his designs and illustrations for publicity material, compiled by Barry McKay.





23. Bawden (Edward)
Engravings, 1927-1929. With an Introduction by David McKitterick. Merivale Editions, 1988, *FIRST EDITION, ONE OF 500 COPIES* designed by Sebastian Carter, 15 copper-engravings by Bawden illustrated at rear, pp. [16], 8vo, original sewn wrappers with integral dustjacket of patterned paper, printed label to front, fine **£55**

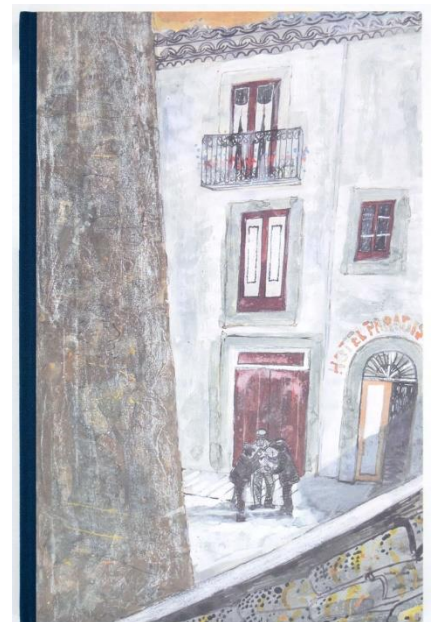


Signed by Bawden
24. (Bawden.) HOWES (Justin)
Edward Bawden: A Retrospective Survey... With a Preface by Halina Graham. Bath: Combined Arts, 1988, *FIRST EDITION, ONE OF 70 HARDBACK COPIES*, Bawden illustrations throughout, pp. xv, [i], 132, small folio, publisher's half navy cloth, boards with Bawden patterned paper in red and white, upper board with label printed in blue, top edge of upper board slightly faded, very good **£400**

Signed by Edward Bawden on the title-page - visibly a late signature, the artist dying the following year.

A very useful reference work.

25. (Previous Parrot Press.) (Bawden.) HOYLE (Walter) To Sicily with Edward Bawden. With an introduction by Olive Cook, and drawings of Sicily by Edward Bawden, Walter Hoyle and Edwin Smith. Church Hanborough: Previous Parrot Press, 1998, 134/350 *COPIES* (250 written in pencil, in error), signed by Walter Hoyle and Olive Cook, printed on Rivoli paper, illustrations throughout including 4 colour-printed and double-spread, the main text a facsimile of Hoyle's manuscript, pp. 67, [4], imperial 8vo, original quarter blue cloth, colour-printed illustration to upper board, backstrip with printed label, paper wrapper with printed label on cover and backstrip hand-written, fine **£120**

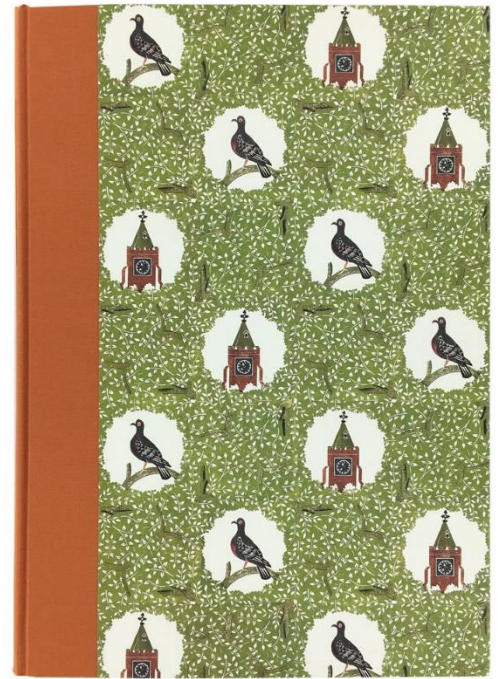
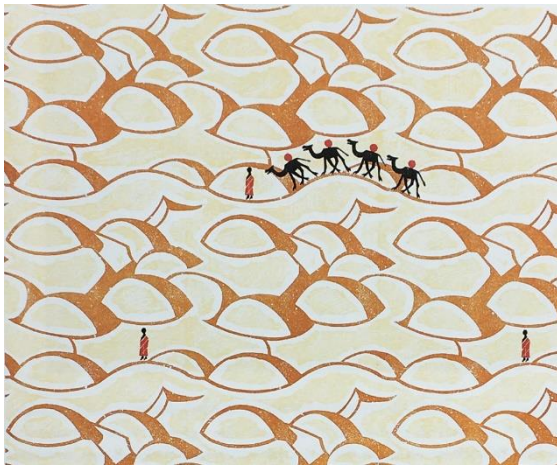


A delightful account of a three-week sketching tour, with a competitive edge, which Hoyle took with his friend and mentor in 1951. With prospectus, also prospectus for Tryphema Pruss (Cook and Hoyle, Previous Parrot Press 1999), Church Street Gallery invoice for Bawden art, flier for art exhibition with works by John Malcolm Lewis, and hand-written postcard to Lewis from Hoyle regarding Bawden.

26. (Fleece Press.) (BAWDEN.) YORKE (Malcolm) *The Inward Laugh*. Edward Bawden and his Circle. *Upper Denby: Fleece Press, 2005, ONE OF 575 COPIES (from an overall edition of 750 copies) printed on PhoeniXmotion Xantur paper, with numerous colour illustrations, with tipped-in addendums, pp. 287, folio, original quarter orange linen by Smith Settle, boards with design of apple-green leaves interspersed with roundels, an adaptation of Bawden's 'Pigeon and Clocktower' pattern, backstrip with printed label, endpapers with Bawden-designed map of the town of Great Bardfield, fine £250*

'It is pleasing to be able to mark the Press' twenty-fifth anniversary with this book' (Simon Lawrence,

colophon). A wonderful history of Edward Bawden, his circle and his times, containing well over 200 of Bawden's illustrations, the great majority reproduced in colour, and including several colour-printed and tipped-in plates. With illustrated Press slip regarding change to binding, broadsheet prospectus with coloured tennis illustration and 6-page printed prospectus with tipped-in illustration and terracotta wrappers loosely inserted.



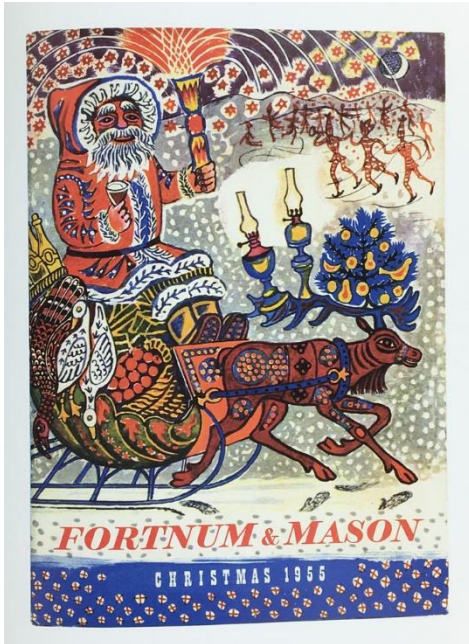
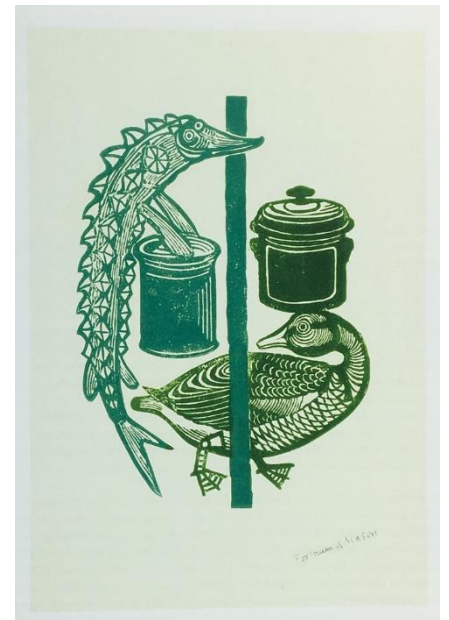
27. (Wood Lea Press.) (BAWDEN.) Greenwood (Jeremy) *Edward Bawden. Editioned Prints*. With an Introduction by Elspeth Moncrieff. *Woodbridge: Wood Lea Press, 2005, ONE OF 450 COPIES (from an edition of 505 copies), over 200 illustrations with the majority colour-printed, title-page printed in red and black, title signed with inscription by the author, pp. 134, oblong folio, original quarter blue linen by Woolnough bookbinders, boards covered with Bawden-designed patterned paper of white and black-outlined leaves on grey ground, backstrip lettered in gilt, slipcase, fine £250*

Inscription reads: 'for Peter with gratitude for the assistance which helped to make the book it is. Jeremy'.

'Bawden was a marvellously inventive artist who worked in many media... The same strengths underlie all his work, in particular his extraordinary sense of observation and his ability to transform his own, very personal vision of the world, into an appealing visual language.' (Moncrieff, Introduction)



28. (Bawden.) SKIPWITH (Peyton) *Entertaining à la Carte*. Edward Bawden and Fortnum & Mason. Norwich: The Mainstone Press, 2007, 92/1,000 COPIES, numerous colour-printed illustrations by Edward Bawden, a number full-page, the majority of the illustrations sourced from the archives at Fortnum & Mason arranged in chronological order, pp. 128, folio, publisher's apple-green cloth, upper board with vivid printed label featuring grouse and asparagus, with original publisher's posting box with illustrated printed label, fine **£110**

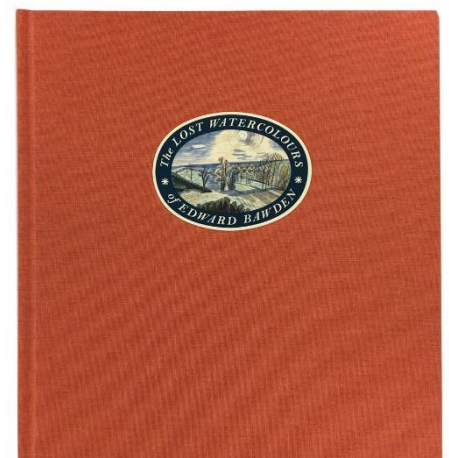


Issued to coincide with the tercentenary of the high-end food emporium, a celebration of graphic advertising art - catalogues, brochures, menus, order forms etc - imbued with Bawden's humour and particular sense of line and colour; with an essay by the artist's friend and former Director of The Fine Art Society, Peyton Skipwith.



29. (Bawden.) RUSSELL (James) *The Lost Watercolours of Edward Bawden*. Norwich: Mainstone Press, 2016, ONE OF 850 COPIES, designed by Lizzie Ballantyne, printed on Gardapat Kiara stock, copiously illustrated with photographs and reproductions of Bawden's work, the majority full-page and in colour, text chapter headings, title and contents printed in blue and red, pp. 192, square 4to, original orange cloth, backstrip lettered in blue, oval illustrated paper label on upper board, patterned endpapers, slipcase, fine **£185**

A highly attractive edition and admirable achievement, bringing together a substantial collection of the artist's lesser known works in this genre: in addition to the paintings exhibited at the Zwemmer Gallery in 1933 and Leicester Galleries in 1938, a significant number of works have been sourced from private collections.



30. (Hand & Eye Editions.) BAWDEN (Edward) & Peyton Skipwith. Dear Edward. Being the Correspondence, 1968-1989. With a Foreword by David Gentleman. *Hand & Eye Editions*, 2017, *FIRST EDITION*, 96/325 COPIES printed on Mohawk Superfine paper, decorations printed in blue and brown, 2 tipped-in facsimile letters, numerous illustrations by Bawden, including many full-page, pp. [vi], 227, 8vo, original quarter red cloth and boards with a patterned paper made from a Bawden design and printed in blue and brown, fine **£140**



A correspondence that began via Skipwith's role at the Fine Art Society, and including a few letters from other people at that institution; the correspondence has a professional context, but with a personal touch that speaks of a friendship that extends beyond business matters.

